



LED Light Kit

A breath of fresh air



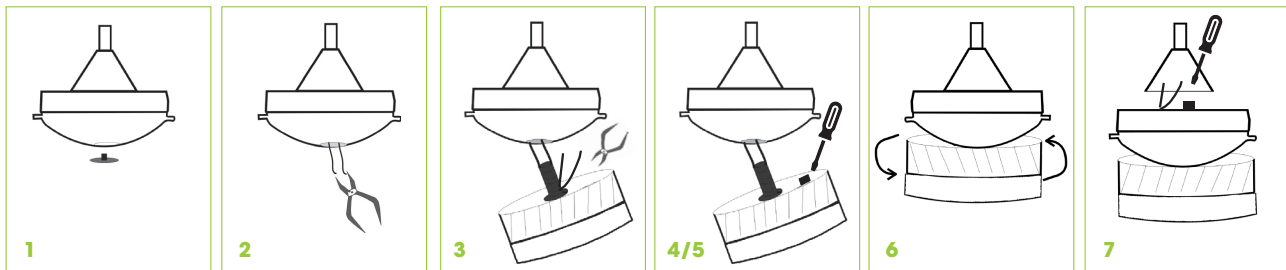
Dear Customer,

Thank you for purchasing a Solent LED Light Kit.

Please read through this Installation Instruction sheet to assist you with the installation of your light kit.

INSTALLATION INSTRUCTIONS

1. Remove the cover cap placed at the lower part of the motor.
2. Pull out the Brown and Blue light connection wires with pliers.
3. Insert the two wires into the heat sleeve and then insert them through the adaptor on the light base.
4. Connect the Brown and Blue light wires to the terminal block on the light base.
5. Secure the wires with the clamp that's on the base of the light kit, in front of the connector block.
6. Screw the light base into the motor and tighten it in an anti-clockwise direction until secure. Once secure, pull the Brown and Blue wires taut from the light base.
7. Connect Brown and Blue light wires to terminal block on the motor. It is important that this is done last to avoid the wires from twisting together when the light base is tightened onto the motor.



LIGHT SOURCE - INCLUDED

1. 1 x multi colour SMD (surface mount device)
2. Colour Render - 2835 RA 85
3. 22 Watt
4. 2200 Lumens
5. Interchangeable Colours:
3000K: Warm White
4000K: Neutral White
6000K: Cool White

OPERATION

WALL REGULATOR OR REMOTE CONTROL

To change between the interchangeable colour options, switch the light switch at the wall or the light button on the remote, off and on.

ATTENTION

1. Remove the packing and make sure that the light kit is undamaged. In case of doubt do not use the light kit, return it to your point of purchase.
2. Do not let children play with parts of the packing (like plastic bags, buttons and foam polystyrene).
3. Check if the electrical voltage and frequency of the circuit correspond to those indicated on the fan.
4. Use the light kit only for the intended purpose; namely as an under light for a ceiling fan.
The manufacturer is not responsible for any eventual damages caused by improper, unwise or faulty use.
5. Before cleaning the light kit please turn the power switch off.

