



# OYSTER Light Kit

A breath of fresh air



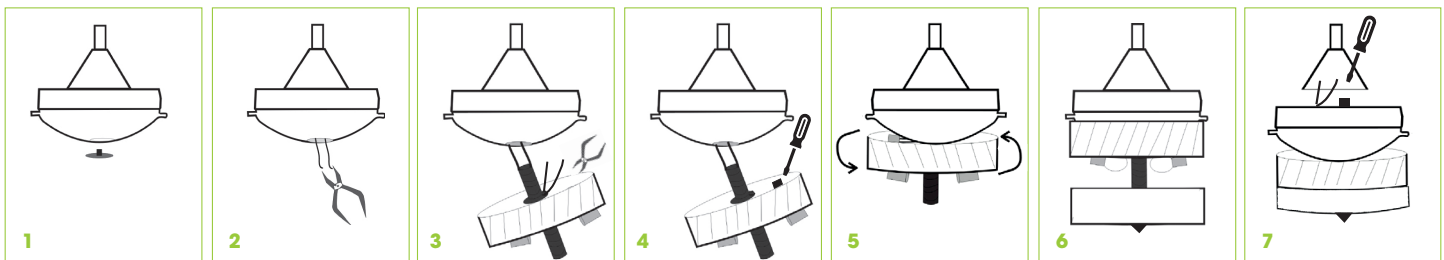
Dear Customer,

Thank you for purchasing a Solent Oyster Light Kit.

Please read through this Installation Instruction sheet to assist you with the installation of your light kit.

## INSTALLATION INSTRUCTIONS

1. Remove the cover cap placed at the lower part of the motor.
2. Pull out the Brown and Blue light connection wires with pliers.
3. Insert the two wires into the heat sleeve and then insert them through the adaptor on the light base.
4. Connect the Brown and Blue light wires to the terminal block on the light base.
5. Mount the light base without glass onto the motor and tighten it anti-clockwise until secure. Once secure, pull the Brown and Blue wires taut from the light base.
6. Position the glass and tighten securely with knob. DO NOT over tighten, the glass may break.
7. Connect Brown and Blue light wires to terminal block on the motor. It is important that this is done last to avoid the wires from twisting together when the light base is tightened onto the motor.



## LIGHT SOURCE - NOT INCLUDED

2 x Edison Screw (ES) Short LED Lamps.

## OPERATION

### WALL REGULATOR OR REMOTE CONTROL

Use separate light switch on the wall or Remote L5.

## ATTENTION

1. Remove the packing and make sure that the light kit is undamaged. In case of doubt do not use the light kit, return it to your point of purchase.
2. Do not let children play with parts of the packing (like plastic bags, buttons and foam polystyrene).
3. Check if the electrical voltage and frequency of the circuit correspond to those indicated on the fan.
4. Use the light kit only for the intended purpose; namely as an under light for a ceiling fan. The manufacturer is not responsible for any eventual damages caused by improper, unwise or faulty use.
5. Before cleaning the light kit please turn the power switch off.

