

Instructions to Clean the Guards and Blade

1. Ensure that the fan is switched off from the power source before removing the guard.
2. Remove the guards and the blade. Be careful to not drop the blade.
3. Use a soft cloth with mild soap to clean off any dust or stains.
4. Wipe with a dry cloth.
5. Never use polish or corrosive liquids as this will damage the paint, metal or plastic.
6. Put the blade back and lock the guard securely before use.
7. Reconnect the power cord.

Safety Instructions

1. This appliance is not intended for use by persons (including children) with reduced physical, sensory or mental capabilities, lack of experience and knowledge, unless they have been given supervision or instruction concerning the use of the appliance by a person responsible for their safety.
2. Children should be supervised to ensure that they do not play with the appliance.
3. If the supply cord is damaged, it must be replaced by the manufacturer, its service agent or similarly qualified persons in order to avoid a hazard.
4. Improper installation may result in the risk of fire, electric shock or injury to persons.
5. Do not place the fan in or near an open window, rain and other weather elements may cause an electrical hazard.
6. Do not immerse or expose the Motor Housing, Power Cord and Plug in water or other liquids.
7. The fan should be placed on a flat and stable surface to avoid overturning when in operation.
8. Never insert fingers or any object through the guards.
9. Do not attempt to open any part of the motor housing as a risk of electrical shock may exist.

Warranty

Solent offers a 3 year warranty from the date of purchase.

The Warranty Becomes Void When:

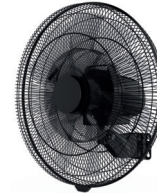
1. Damage is caused to the product due to improper operation or voltage fluctuations.
2. Incorrect assembly and installation.
3. If the labels have been removed from the product.
4. Attempt to repair, adjust or modify any electrical or mechanical functions on this unit.

Return of Product

If you need to exchange or replace the unit, return it in its original packaging with all supporting documentation.



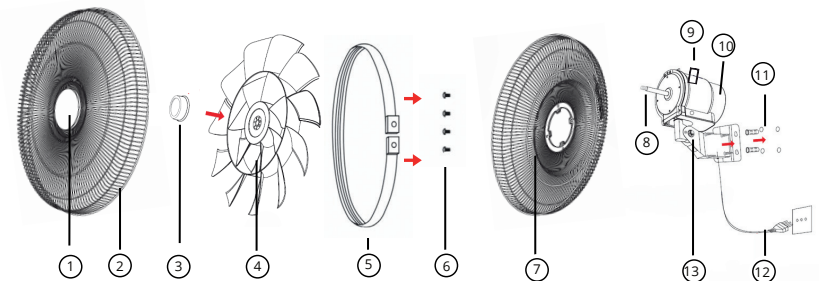
† +27 (0) 31 563 4600
f +27 (0) 31 563 4654
info@solent.co.za
www.solent.co.za



Wall Fan

450mm Energy Saving Fan

Dear Valued Customer, thank you for choosing a Solent fan. To ensure you make the most of your purchase, we kindly request that you take a moment to review this instruction sheet.

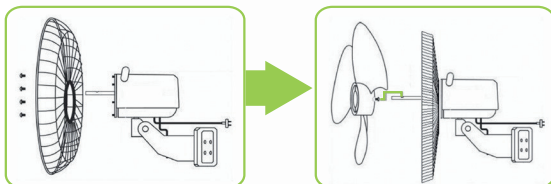


Exploded View

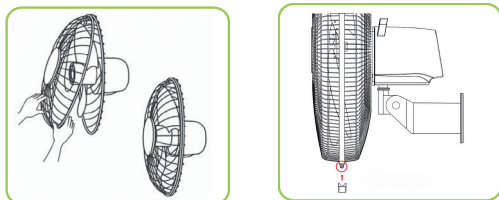
- | | |
|------------------------------|------------------------------|
| 1. Name Plate | 8. Motor Shaft |
| 2. Front Guard | 9. Elevation Tilt Handle |
| 3. Blade Locking Nut | 10. Motor Housing |
| 4. Blade | 11. Wall Mounting Screws |
| 5. Guard Ring | 12. Power Cable |
| 6. Rear Guard Locking Screws | 13. Elevation Tilt Mechanism |
| 7. Rear Guard | |

Installation Instruction

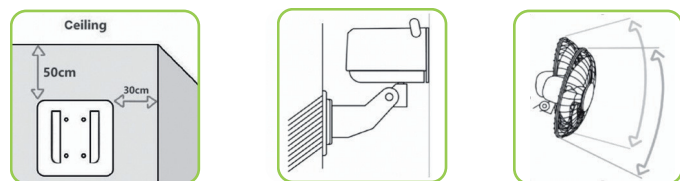
Be sure to shut off the electricity supply at the main switch or circuit breaker before installation.



1. Loosen the four Rear Guard Locking Screws (label 7 in diagram) from the motor housing, position the Rear Guard firmly to the motor housing and fasten the four Rear Guard Locking Screws tightly.
2. Push the Blade (label 4 in diagram) along the Motor Shaft (label 9 in diagram) and fasten it by tightening the plastic Blade Locking Nut (label 3 in diagram).



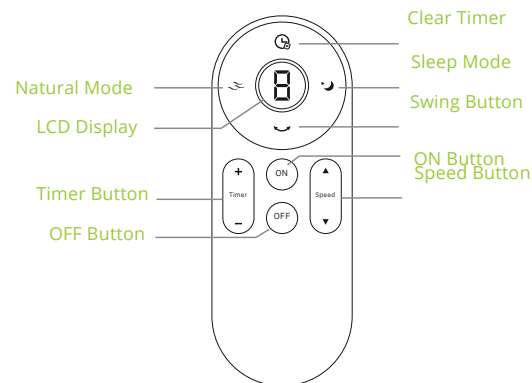
3. Loosen the screw at the bottom of the Rear Guard.
4. Push the security lock downwards, then insert the Front Guard (label 2 in diagram) into corresponding position of the Guard Ring (label 5 in diagram).
5. Align the Front and Rear Guards carefully.
6. Tighten the Blade Locking Screw of the security lock.



7. Mark and drill the Mounting Screws into the wall.
NB: The Wall Mounting Bracket must have a minimum distance of 50cm from the ceiling/roof and a 30cm distance from wall corners.
8. Attach the Wall Fan to the Wall Screws.
9. Adjust the fan elevation angle for best air direction by pushing the Elevation Tilt Handle back or forth.
10. Neatly run the power cord to the power source/socket outlet. Ensure that the voltage used is **220-250 volts 50/60 Hz**.

Remote Control

1. There is a "beep" sound on the control panel every time the remote control key is used.
2. Remote distance is 10 meters.



Pairing One Fan to One Remote Control

1. Check that the batteries are inserted into the remote control.
2. Plug your fan into the power supply and within 10 seconds, press the ON button four times, on the 4th press, hold the ON button until you hear a beep.
3. You have now successfully paired your fan to your remote control.
4. You can now press the ON button to turn on the fan.

Pairing Multiple Fans to One Remote Control

1. After a fan is successfully paired, unplug the paired fan from the power source.
2. Repeat the steps for 'Pairing One Fan to One Remote Control' to pair the next fan.
3. Remember that only one fan can be paired at a time, all other fans must be unplugged from the power source during pairing.
4. One Remote Control can be paired with a maximum of ten fans.

Speed & Oscillation

1. Press the On/Off button to switch the fan on and off.
2. Choose a speed setting from 1 to 6 (1 Slowest - 6 Fastest) by pressing the arrows up and down.
3. Press the Swing button for side to side oscillation.

Timing Function

Press the Timer Button to select the desired count down up to 9 hours.

Energy Efficiency - Power Consumption Per Speed Setting

These fans are extremely energy efficient, consuming a minimum of 4 watts and a maximum of 75 watts, depending on the speed setting between 1 and 6.

Power Out Memory Function

After a power outage or a tripped circuit breaker, the fan will default to fan ON. The fan will run at the speed that was last saved in memory.